

Zoning Map Atlas

TOWN OF STONINGTON CONNECTICUT ZONING MAP ATLAS



Revised through September 19, 2017

ZONING MAP ATLAS

TOWN OF STONINGTON, CONNECTICUT

REVISED TO SEPTEMBER 19, 2017

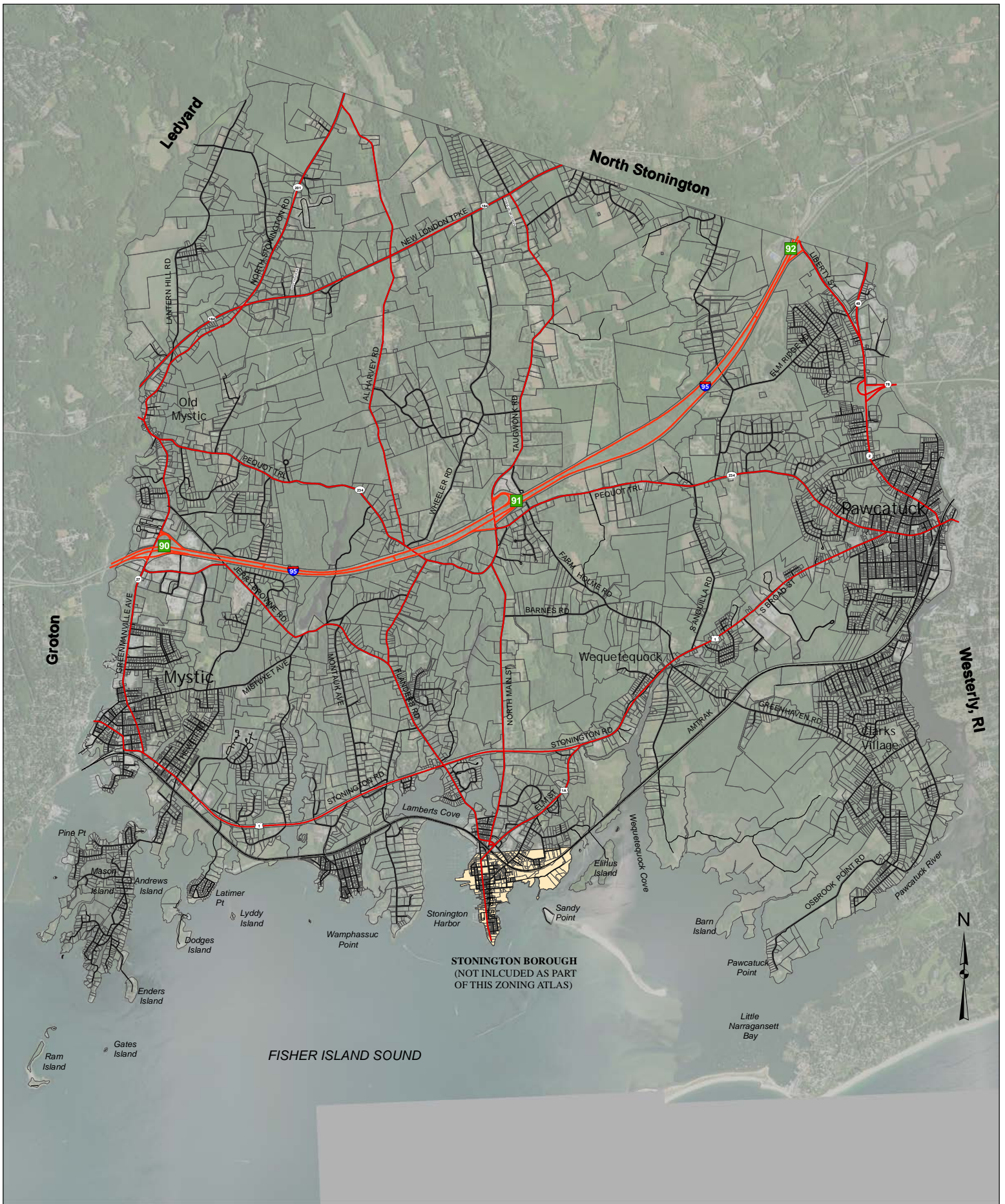
TABLE OF CONTENTS

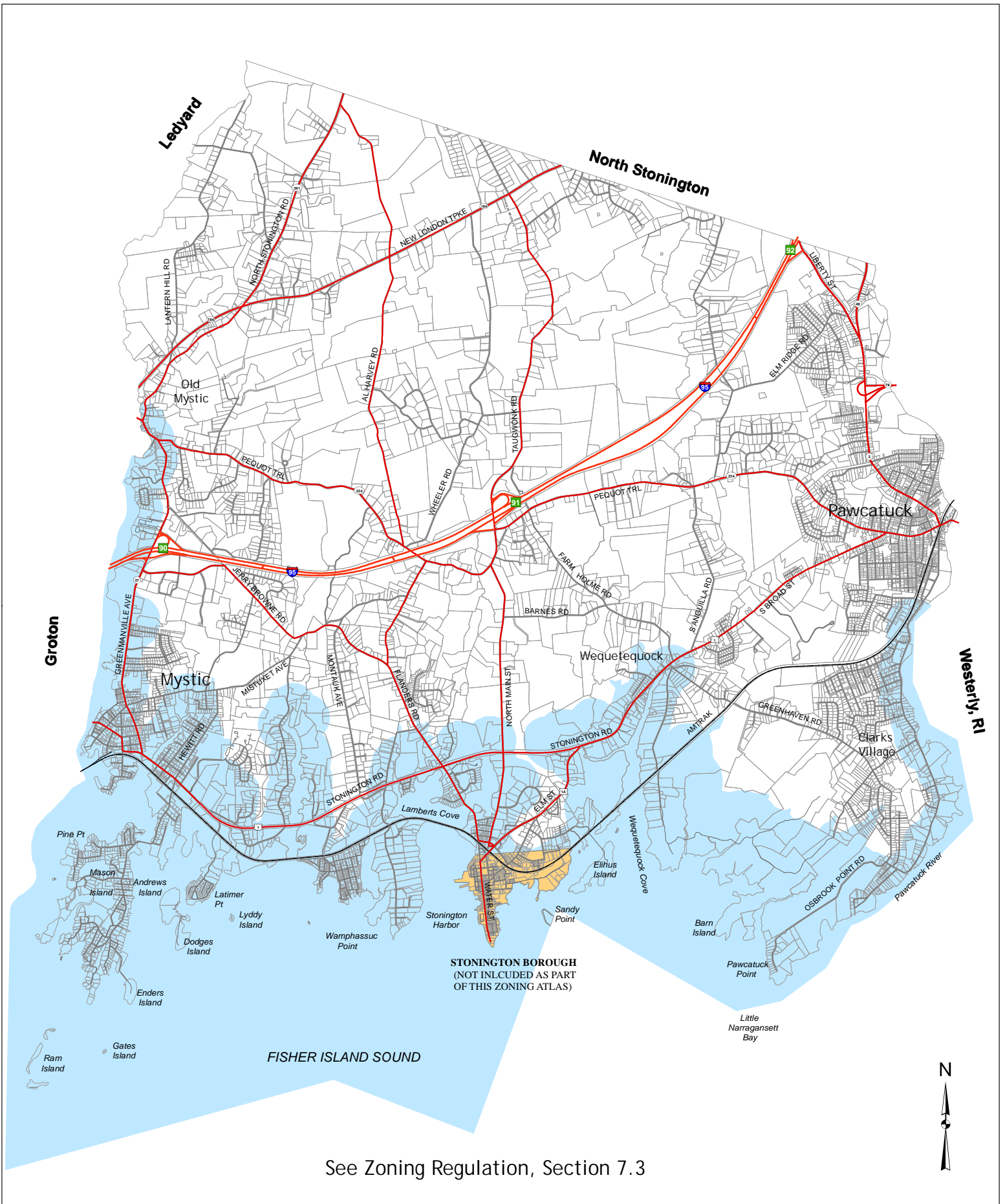
MAP 1	TOWNWIDE PARCEL & ROADWAY MAP
MAP 2	COASTAL AREA MANAGEMENT OVERLAY DISTRICT Zoning Regulations, Section 7.3
MAP 3	FLOOD HAZARD OVERLAY DISTRICT Zoning Regulations, Section 7.7
MAP 4	GROUNDWATER PROTECTION OVERLAY DISTRICT (Section 7.2) AQUIFER PROTECTION AREA
MAP 5	TOWNWIDE ZONING DISTRICT MAP
MAP 6	ZONING DISTRICT MAP SHOWING PROPERTY LINES
MAP 7	MYSTIC VILLAGE ZONING MAP ENLARGEMENT
MAP 8	PAWCATUCK VILLAGE ZONING MAP ENLARGEMENT

DISCLAIMER

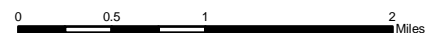
This atlas has been created by the Town of Stonington for informational purposes only and should not be considered a final determinant of zoning or land use information for a particular parcel or tract of land. Information contained herein has not been verified by a Licensed Professional Land Surveyor and is not intended to be used for the transfer of property. The Town of Stonington makes no warranty, express or implied, related to the accuracy or content of these maps. Please visit the Stonington Planning Department for a more accurate determination of zoning map information.

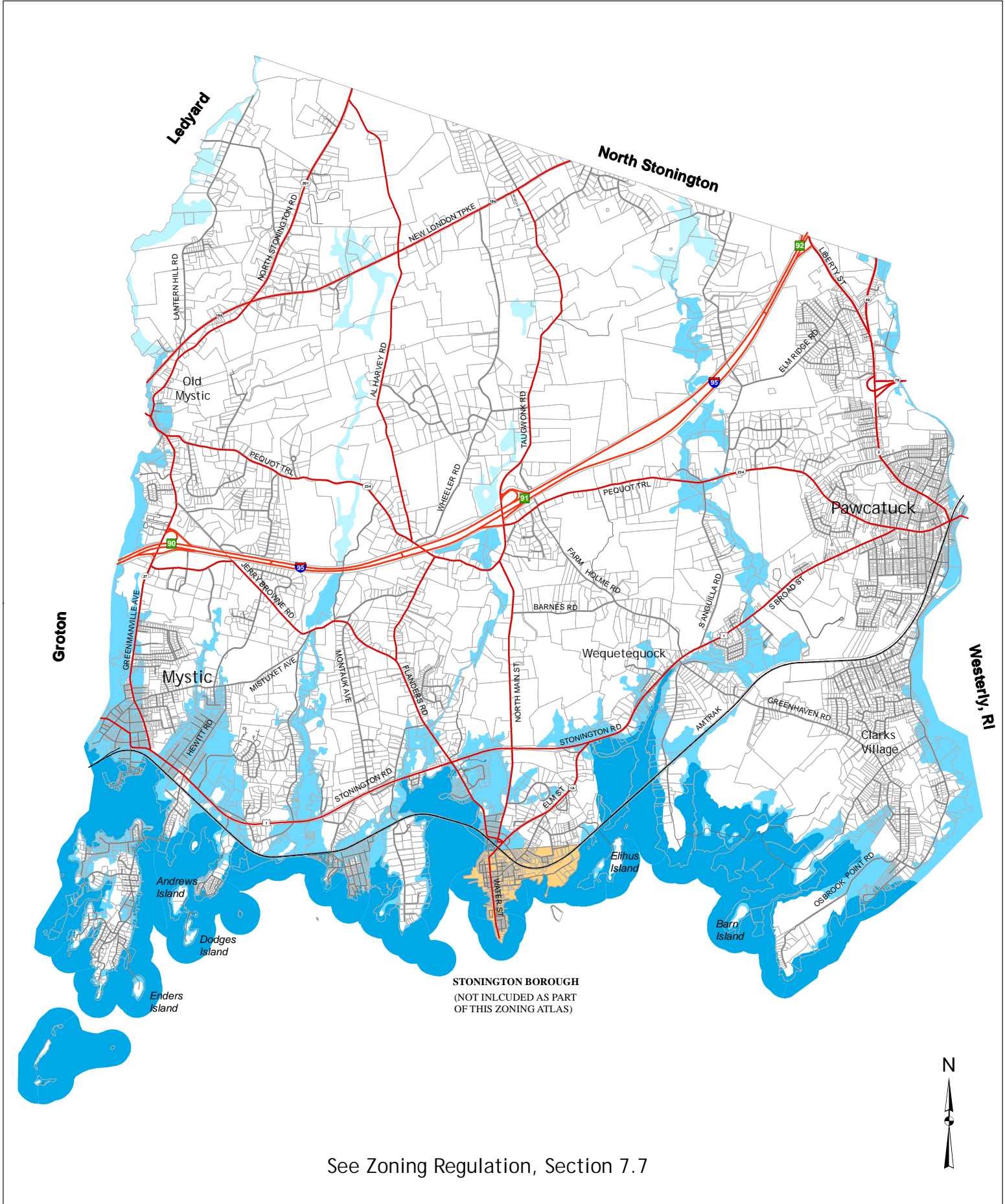
Stonington Town Hall, 152 Elm Street, Stonington, CT 06378
(860) 535-5095





See Zoning Regulation, Section 7.3





See Zoning Regulation, Section 7.7



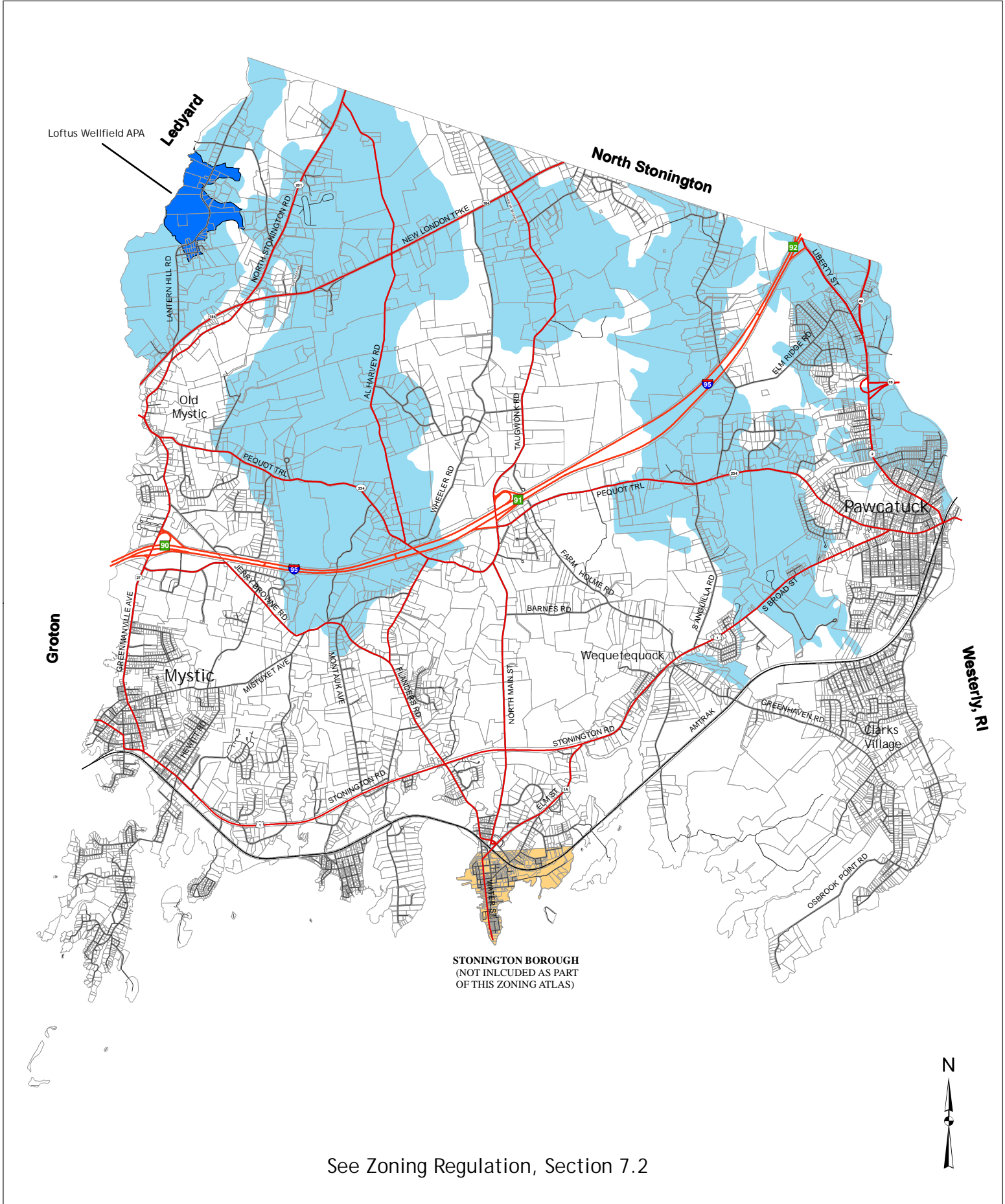
Zoning Map Atlas Planning and Zoning Commission, Town of Stonington, Connecticut

Flood Hazard Overlay District

- VE
- AE
- A

Effective July 20, 1961 as amended through September 19, 2017

Data: Stonington GIS / Projection: Connecticut State Plane NAD83



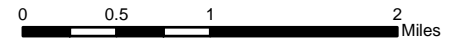
See Zoning Regulation, Section 7.2



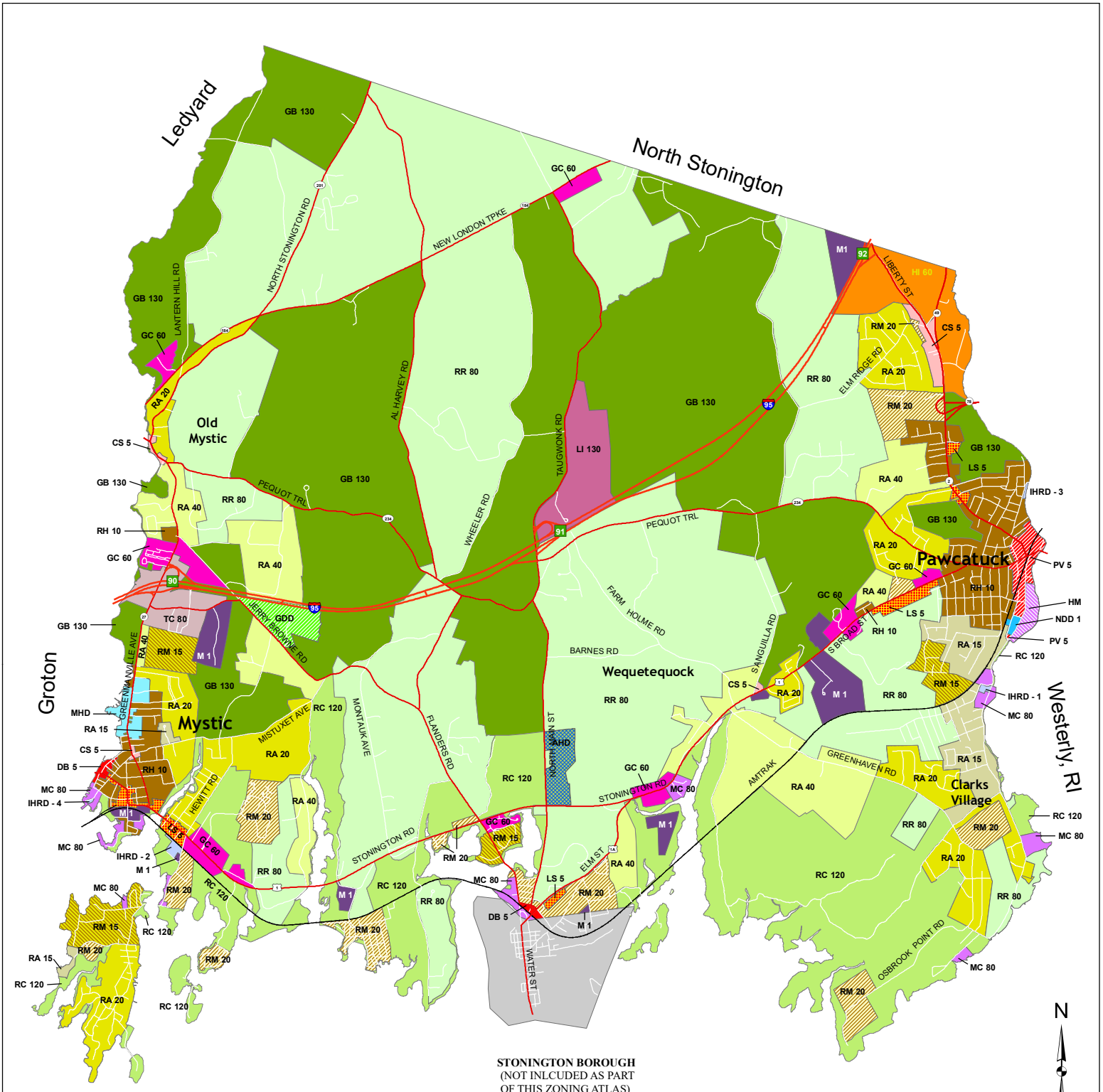
Zoning Map Atlas Planning and Zoning Commission, Town of Stonington, Connecticut

- Aquifer Protection Area (APA)
- Groundwater Protection Overlay District (GPOD)

Effective July 20, 1961 as amended through September 19, 2017



Data: Stonington GIS / Projection: Connecticut State Plane NAD83



STONINGTON BOROUGH
(NOT INCLUDED AS PART OF THIS ZONING ATLAS)

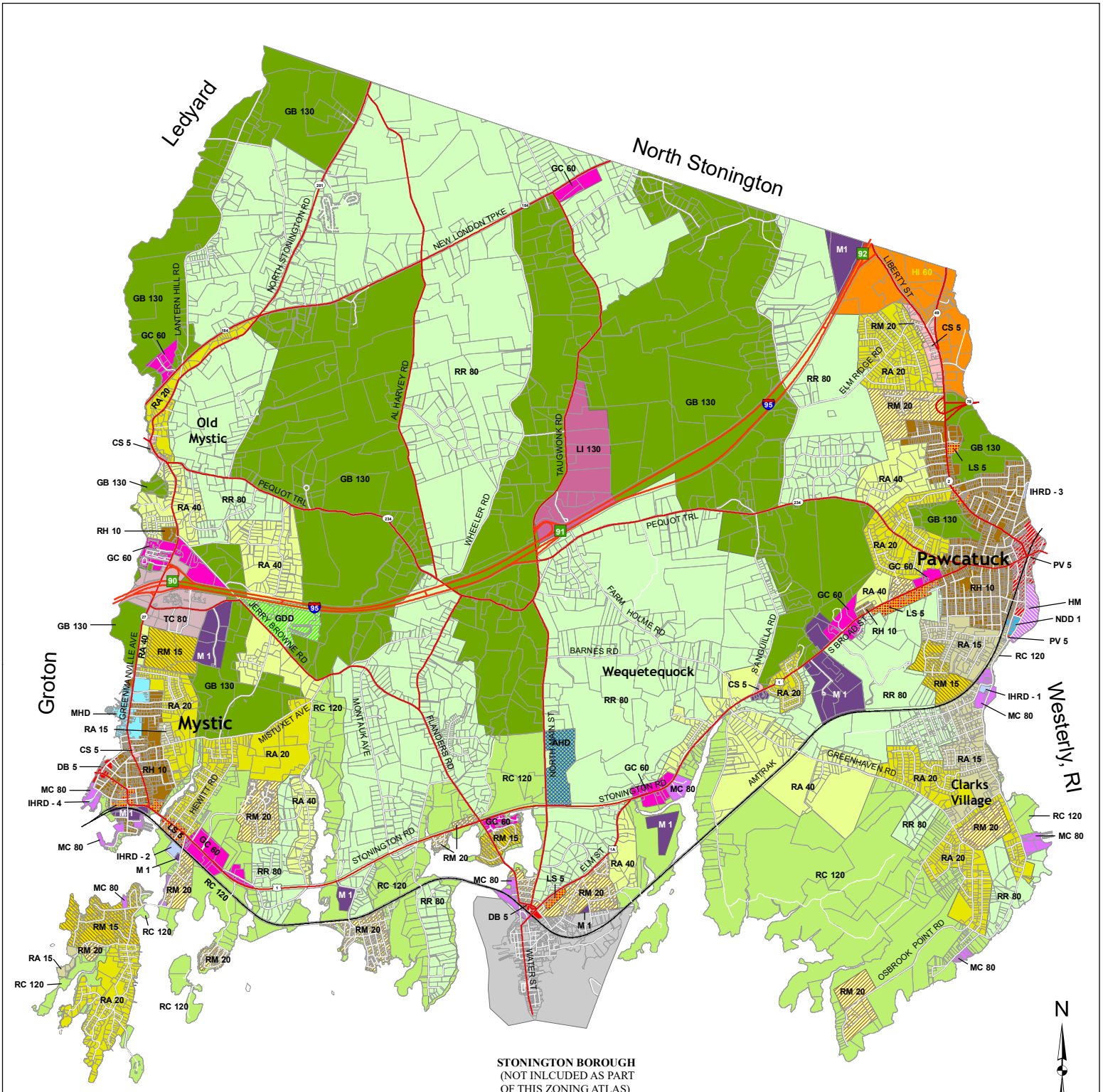


LEGEND

- | | | |
|------------------|-------------------|---------------------|
| Commercial CS-5 | Commercial TC-80 | Residential RA-20 |
| Commercial DB-5 | Industrial M-1 | Residential RM-20 |
| Commercial LS-5 | Industrial LI-130 | Residential RA-40 |
| Commercial GC-60 | Residential RH-10 | Residential RR-80 |
| Commercial HI-60 | Residential RA-15 | Residential RC-120 |
| Commercial MC-80 | Residential RM-15 | Residential GBR-130 |

- | |
|-------------------------------------|
| Maritime Heritage District |
| Industrial Heritage Re-Use District |
| Neighborhood Development District |
| Agricultural Heritage District |
| Greenway Development District |
| Heritage Mill District |
| Pawcatuck Village District |





STONINGTON BOROUGH
(NOT INCLUDED AS PART
OF THIS ZONING ATLAS)

LEGEND

- | | | | |
|------------------|-------------------|---------------------|-------------------------------------|
| Commercial CS-5 | Commercial TC-80 | Residential RA-20 | Maritime Heritage District |
| Commercial DB-5 | Industrial M-1 | Residential RM-20 | Industrial Heritage Re-Use District |
| Commercial LS-5 | Industrial LI-130 | Residential RA-40 | Neighborhood Development District |
| Commercial GC-60 | Residential RH-10 | Residential RR-80 | Agricultural Heritage District |
| Commercial HI-60 | Residential RA-15 | Residential RC-120 | Greenway Development District |
| Commercial MC-80 | Residential RM-15 | Residential GBR-130 | Heritage Mill District |
| | | | Pawcatuck Village District |

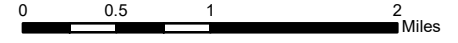
STONINGTON
Department of Planning



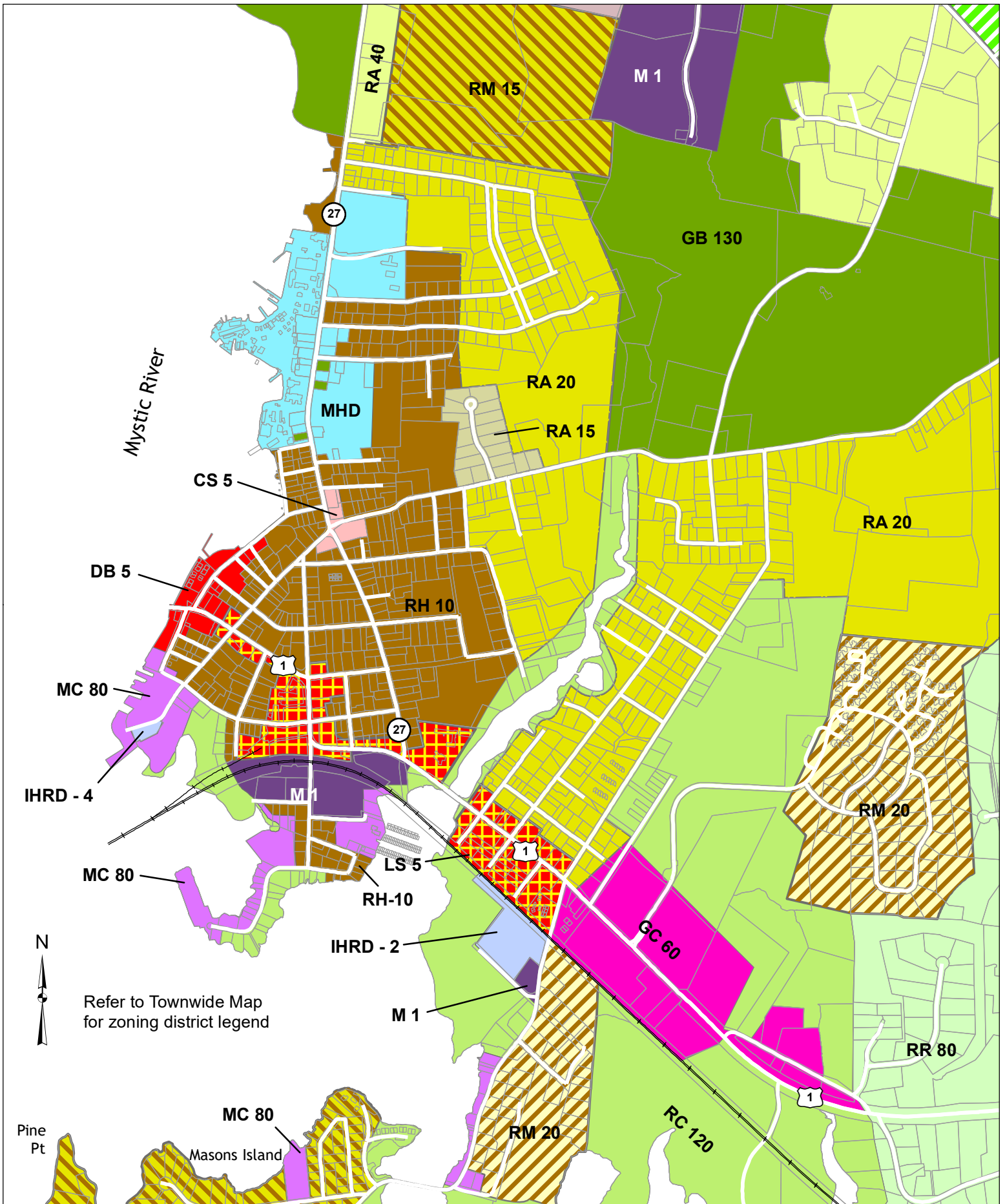
Zoning Map Atlas Planning and Zoning Commission, Town of Stonington, Connecticut

Zoning Map
Parcels, Roadways and Zoning Districts

Effective July 20, 1961 as amended through September 19, 2017



Data: Stonington GIS / Projection: Connecticut State Plane NAD83



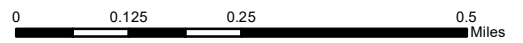
STONINGTON
Department of Planning



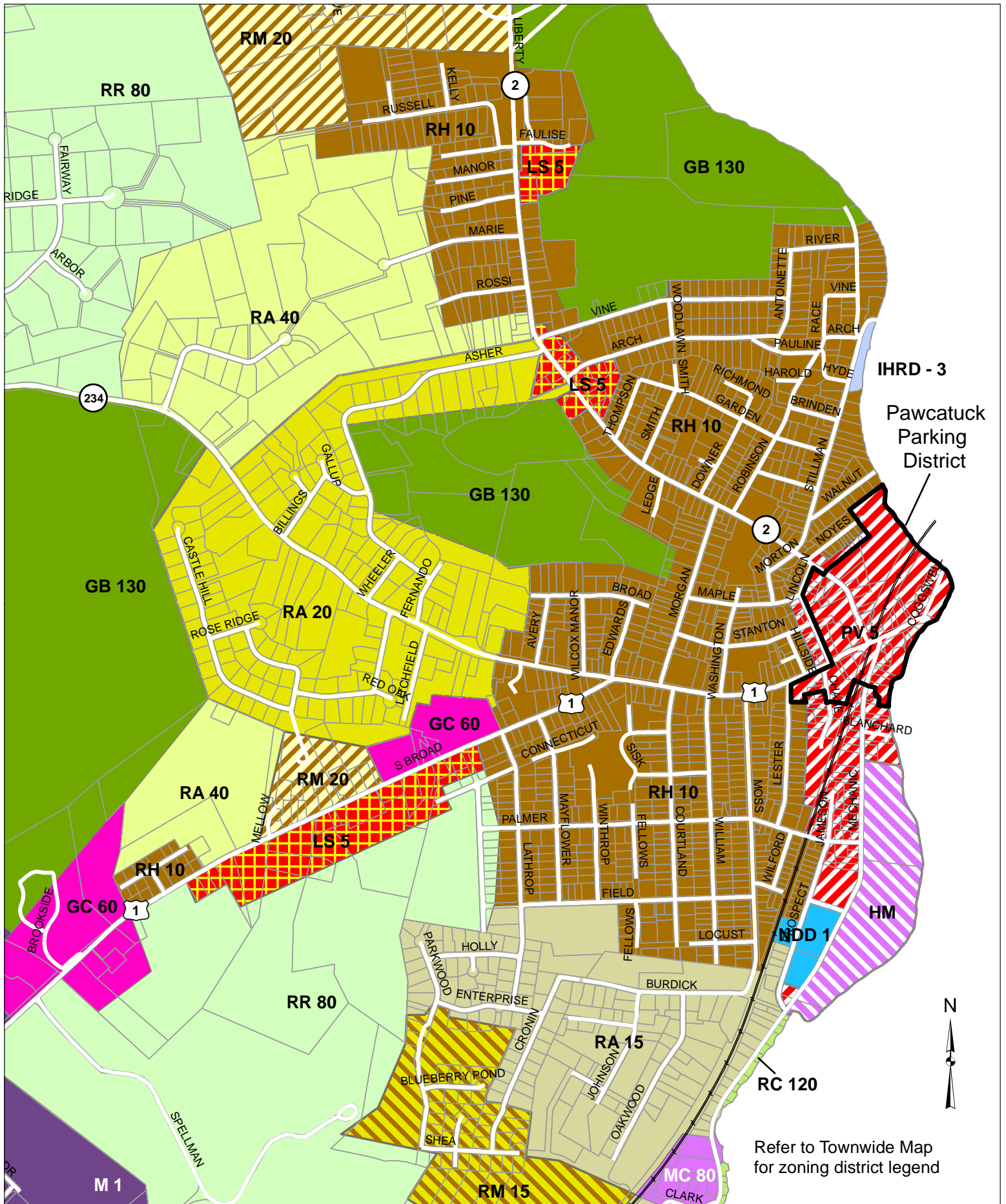
Zoning Map Atlas Planning and Zoning Commission, Town of Stonington, Connecticut

Mystic Village Center
Parcels, Roadways, and Zoning Districts

Effective July 20, 1961 as amended through September 19, 2017

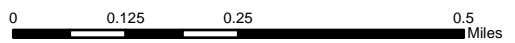


Data: Stonington GIS / Projection: Connecticut State Plane NAD83



IHRD - 3
Pawcatuck
Parking
District

Refer to Townwide Map
for zoning district legend



ZONING MAP ATLAS

TOWN OF STONINGTON, CONNECTICUT

REVISED TO SEPTEMBER 19, 2017

PLANNING & ZONING COMMISSION: **David Rathbun**
Chairman

Curtis Lynch
Vice Chairman

Shaun Mastroianni
Secretary

Ben Philbrick

A. Gardner Young

ALTERNATES:

Harry Boardsen

Lynn Conway

COMMISSION STAFF:

Jason Vincent, AICP
Director of Planning

Keith Brynes, AICP
Town Planner

Candace Palmer, CZEO
Zoning/Inland Wetland
Enforcement Officer

Gayle Phoenix, CZET
PZC & Zoning Permit Administrator

Cheryl Sadowski
IWWC & ZBA Permit Administrator